

# Scone Bypass



The new Scone Bypass will soon open to traffic enabling faster drive times along the New England Highway in NSW.

Daracon Group were contracted to construct the 5.5 kilometre bypass in March 2018.

Deputy Prime Minister and Federal Minister for Infrastructure, Transport and Regional Development Michael McCormack said the entire region will benefit immensely from the bypass opening.

NSW Minister for Regional Transport and Roads Paul Toole said the bypass would change the way people moved in and around Scone.

“Until now, highway traffic passed through Scone along the main road access to the town which is also the main street through the central business district,” Mr. Toole said.

The 8400 daily vehicles will no longer need to travel through the town centre on the New England Highway south of Scone.

The grade-separated intersection at the southern end of the bypass, which crosses over the rail line and Kingdon and Liverpool Streets, will allow uninterrupted access to the bypass at the north and south of town and in the middle at Aubins Street.

On this section of the highway there had been 26 crashes in the five years to December 2015 and the upgrade is hoped to improve road safety in the area.

## Background

At the time of the project’s announcement, Deputy Prime Minister and Minister for Infrastructure and Transport Michael McCormack said construction of a two-lane highway bypass to the west of Scone – the delivery of which was subsequently awarded to Daracon Group – would remove a large number of heavy vehicles from the town centre and improve travel times and safety for all road users.

“Around 8000 vehicles, including around 1200 heavy vehicles, use the Kelly Street level crossing in Scone’s central business district every day. Substantially reducing these volumes of vehicles will provide huge safety and amenity benefits,” Mr McCormack said.

New South Wales Minister for Roads, Maritime and Freight Melinda Pavey said the four-kilometre section of highway to be bypassed had a poor crash history with 26 crashes recorded in the five years to December 2015.

“The new bypass will help address rising road and rail volumes as well as associated safety issues,” Mrs Pavey said.

Federal Member for New England Barnaby Joyce said the bypass will provide an alternative route for road users wanting to travel across town unrestricted by rail operations and will be particularly important for emergency services.

“This \$120 million project ensures we have the road infrastructure in place to grow our economic future in the New England,” Mr Joyce said.

## MAJOR PROJECT SPECIALIST



**NEWCASTLE HI-TENSILE BOLT Co.**



**SPECIALISTS**  
in the supply of ...

**Construction Fasteners**  
**Chemical Anchors**  
**Foundation Bolts**  
**Structural Assemblies**

3 Gipps Street  
Carrington  
NSW 2294  
**02 4968 9101**  
sales@nhtb.com.au  
www.nhtb.com.au

The Australian and NSW governments are jointly funding construction of the bypass.

The bypass will remove around 500 heavy vehicles from the town centre of Scone and will improve traffic flow, travel times, and safety for all road users. Major construction started in June 2018.

The New England Highway south of Scone carries 8400 vehicles a day, peaking in town at 14,000. Around 8000 vehicles use the Kelly Street crossing every day, including 1200 heavy vehicles.

Following extensive community consultation and environmental assessment, the preferred route was assessed and approved in April 2016.

An Environment Protection Licence (EPL) was also issued to regulate environmental impacts during construction and Daracon was awarded the contract for construction in March 2018.

## Features

### Key features of the upgrade include:

- a two lane highway bypass to the west of Scone passing between White Park and the redeveloped Scone golf course
- three bridges – providing a grade-separated intersection at the southern end, crossing over the rail line south of Scone, and crossing over Kingdon and Liverpool streets
- access to and from the bypass to the north and south of town and midway at St Aubins Street providing for all turning movements.
- The bypass responds to site specific conditions including:
- close and multiple accesses to and from town to encourage passing trade
- combination of embankments, bridge structures and formed drainage channels will maintain the existing movement of flood water
- bridge over the rail line which provides an alternative route across town improving access for emergency services and other road users
- Aboriginal and European heritage investigation and management
- integration with the redeveloped Scone golf course.

## History

### May 2018

- Expression of interest called for local suppliers to assist in construction
- Survey work
- Condition surveys started.
- June 2018
- Site office established at 12 Makybe Diva Street
- First 27 metre long concrete bridge beam delivered to site compound.

### July 2018

- Route alignment fenced
- Removal of Bill Rose Sports Complex playground and exercise equipment
- Environmental controls established



- Delivery of embankment fill to site started
- Access routes to the project area developed
- Site clearing activities commenced.

### Fast facts:

- Five kilometres of two-lane highway
- Around 250,000m<sup>3</sup> of imported road fill
- Three bridges (totalling 740 metres)
- Three access points to town
- Local construction jobs
- Around two years from start to completion

## Construction Overview

### Utility and Asset Protection

Underground utility services will be identified and protected. Substandard infrastructure will be replaced. Roads to be used by heavy vehicles during construction will be assessed before use and returned to their pre-existing condition at project completion.

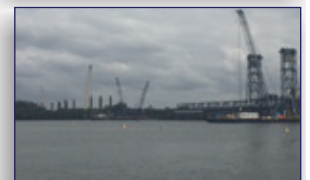
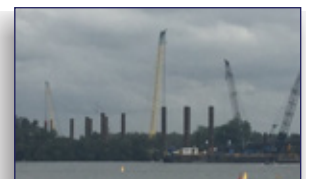
## CDA Eastland

TRADE SUPPLIES

CDA Eastland are Market leaders in Fasteners, Sealants, Adhesives, Grouts, Epoxies, Powertools, PPE and more. We have a Wealth of knowledge on Road and Civil projects of all types.

**Proudly Australian Owned and Operated**

*We pride ourselves on our superior service with prompt deliveries and representatives servicing sites*



**Phone: 1300 CDAETS (232387)**

Website: [www.cdaets.com.au](http://www.cdaets.com.au)

Email: [sales@cdaets.com.au](mailto:sales@cdaets.com.au)

## Importation of fill

Construction continues with the importation of around 250,000m<sup>3</sup> of fill. This is expected to continue until mid-2019. Fill will be sourced from various locations to minimise heavy vehicle traffic in town.

## Heavy vehicles will mostly access the project area from:

- dedicated turning lanes off the New England Highway at the north and south of town
- the golf course via Aberdeen St and Liverpool St
- St Aubins Street via Aberdeen Street and Liverpool Street.

## Recently Completed Work

Recently completed work The project team has finished installing stormwater drainage on the bridges and the transparent noise barrier on the eastern side of Parsons Gully bridge.

The concrete structural work for all three bridges is complete and ready for the final asphalt road surface. Street lights have been turned on at the southern interchange while the lights at the St Aubins Street and northern intersections are expected to be turned on in the coming months.

## Upcoming work

Planned construction activities include:

- Night work at the southern interchange to replace asphalt on the existing New England Highway
- Finishing the southern U-turn bay
- Installing road signage
- Completing road work at the southern and northern connections with the New England Highway
- Continuing to plant trees and grasses and carrying out watering to establish vegetation
- Completing the pedestrian path from the golf club to the golf course under Parsons Gully bridge
- Rehabilitating temporary site compounds

## Subcontractors and Suppliers

Advanced Sweepers Pty Ltd	Road Sweeping
All Day Concrete	Supply of concrete
Allweld Services Pty Ltd	Supply hard hat straps
Alligator Constructions P/L	Subsoil drainage works
AR Cummings Pty Ltd	Underbore Works
Asquith Workforce	Labour hire
Avante Linemarking	Line marking works
BE Steelfixing	Steel fixing works
Caporn Piling	Piling works
CDA Eastland Trade Supplies Pty Ltd	Supply of retail hardware items
Coffey Corporate Services	Primary testing services
Conplant Pty Ltd	Equipment hire
Daracon Mining Pty Ltd	Polywelders
Daramin Engineering P/L	Bridge beams
Dynaton Sales and Hire	Supply former tubes
Freo Group Pty Ltd	Crane hire & rigging
Fulton Hogan Industries P/L	Supply of asphalt

Geofabrics Australasia P/L	Supply of geofabric
Golden Pipe & Civil Pty Ltd	Watermain out/in installation
Greenaway Sediment Control Pty Ltd	Supply sediment control
Hi-Vis Signs and Safety	Supply of signs
Hunter Spring Water	Supply of water
Husky Demolition Pty Ltd	Truck and dog hire
Ingal Civil Product	Guardrail supply
Lack Group Personnel Pty Ltd	Traffic control (personnel)
Leiden Excavations	Plant hire
Newcastle Hi-Tensile Bolt Company	Supply nuts & bolts
Newpave Asphalt Pty Ltd	Asphalt works
Nexus Power Pty Ltd	Electrical utility adjustment works
Nova-Cut Concrete Sawing	Supply cutting blades
Orange Hire Pty Ltd	Supply of VMS boards
Polyfabrics Australia Pty Ltd	Supply of geofabric
Rosebroom Sand and Gravel	Supply and delivery of rock
Shore Hire Pty Ltd	Hire of struts and plates
Transvent Spiral Tubing P/L	Supply pier liner column
VGT Laboratories Pty Ltd	Dust Lab services
Willow Tree Gravels Pty Ltd	Supply of quarry products
Woods Haulage and Excavations	Container delivery



**Specialising in unique, cost effective and high quality professional aerial photography for the construction and property industry.**

**SKYview** has been in business for nearly 15 years servicing the construction industry, with over 25 years of on-site construction experience.

Servicing all projects from small residential to the largest of government projects, throughout NSW and ACT.

We are unconditionally certified, insured, and operate from planes, helicopters and drones as required.






**Contact us - Ph: 0431 931 910**

[www.skyviewaerial.com.au](http://www.skyviewaerial.com.au) - [enquire@skyviewaerial.com.au](mailto:enquire@skyviewaerial.com.au)